

F. Atlee Dodge Aircraft Services, LLC.

6672 Wes Way Anchorage, Alaska 99518

Phone: (907) 344-1755 * Fax: (907) 344-6720

INSTALLATION INSTRUCTIONS

F. ATLEE DODGE SHOULDER HARNESS ATTACH BRACKET 3232-1

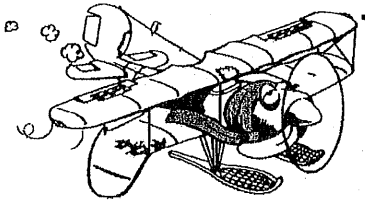
1. If a cloth headliner is installed, locate tube 10562-80. This tube is a 7/8 tube located just below the aft. Edge of the skylight at Fuselage Station 33 7/8".
2. Find the center of this tube. A post is welded to the upper side of the tube so you must install the forward shoulder harness attach bracket 3232-1 to one side of this post. You might have to remove a small amount of the fabric headliner to be able to install the fitting.
3. If a metal headliner is installed, you will have to remove one of the channels at the top forward portion of the headliner to expose the 10562-80 tube.
4. Install the front shoulder harness attach bracket 3232-1 and torque the two bolts to 50-70 in-lbs. Referring to the drawing number 3232-1 sheet 1 of 1.
5. Be sure the bracket is positioned in the direction of pull.
6. Trim the headliner channel to fit around the shoulder harness attach bracket.
7. Install the channel.
8. Weight & Balance
Front fitting weight: 5oz without belt
9. This installation complies with AC 43-13-2B chapter 9 section 1 paragraph 903-A is considered a minor change. Make a log book entry as required.

Document Number: 3232-1

Revision: A

Date: July 6, 2009

Sheet 1 of 6



F. Atlee Dodge Aircraft Services, LLC.

6672 Wes Way Anchorage, Alaska 99518

Phone: (907) 344-1755 * Fax: (907) 344-6720

INSTALLATION INSTRUCTIONS FOR AFT SHOULDER HARNESS ATTACH BRACKET 3232-2

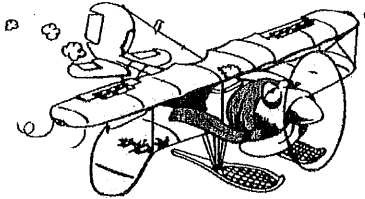
10. Gain access through the battery access panel.
11. Position the bracket on the aft. Section of the "V" brace as shown on Drawing 3232-1, Sheet 1 of 1.
12. Install the two bolts in the fitting and torque to 50-70 in-lbs. Weight and balance of rear attach harness bracket 13.oZ without belt.
13. Suggested procedure if headliner is installed.
 - 13.1 Fabric a 3 inch disk with a 2 inch circle. Remove from the center as shown in drawing number 3262 sheet 1 of 2. If a metal headliner is installed, only on -4 disk is required.
 - 13.2 Punch 6 ea. #30 rivet holes evenly spaced through disk and match through vinyl seal.
 - 13.3 Locate the spot where the doublers assembly is to be installed in the headliner. The metal headliner will have to have a 2 inch piece removed with the doubler assembly, fitted over the cutout and riveted in place.
 - 13.4 The cloth headliner will have the doublers installed matching the slit in the vinyl seal.
 - 13.5 Rivet the doubler assembly as shown in drawing number 3262 sheet 1 of 2 on Sheet 1 of 2.
 - 13.6 A short length of 5/32" x 7 x 19" cable to be installed to the 3232-2 shoulder harness attach bracket. Make cable long enough to wedge a thimble and a shackle to the cable section coming through the headliner referring to drawing number 3262 sheet 2 of 2.
14. This installation comlies with AC 43-13-2B chapter 9 section 1 paragraph 903-A is considered a minor change. Make a log book entry as required.

Document Number: 3232-1

Revision: A

Date: July 6, 2009

Sheet 2 of 6

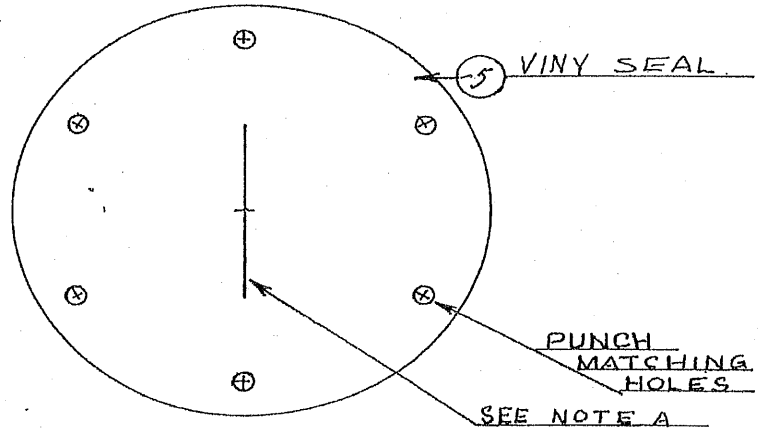
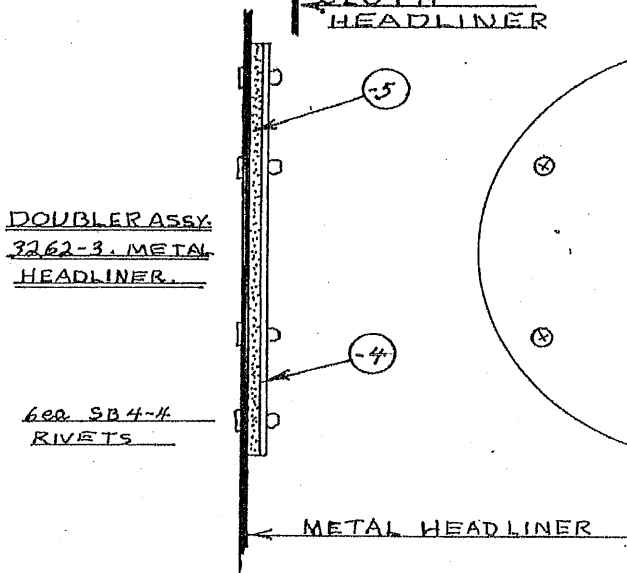
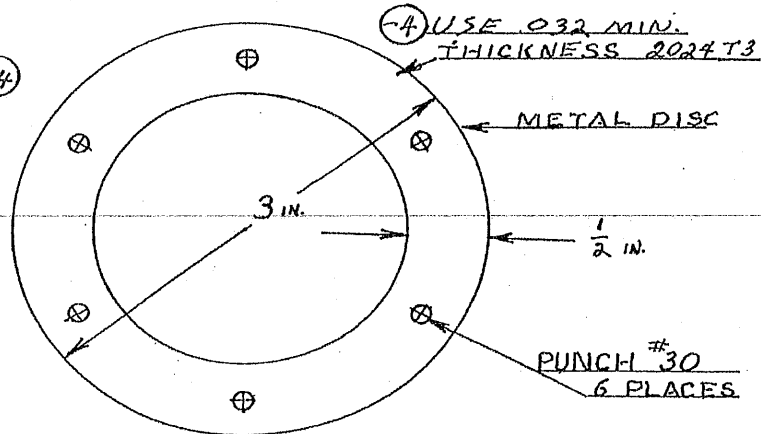
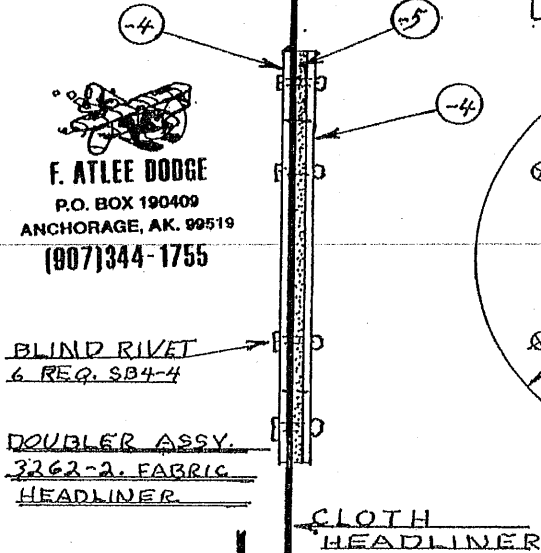


F. Atlee Dodge Aircraft Services, LLC.

6672 Wes Way Anchorage, Alaska 99518
 Phone: (907) 344-1755 * Fax: (907) 344-6720

F. ATLEE DODGE
 P.O. BOX 190409
 ANCHORAGE, AK. 99519
 (907)344-1755

QTY	P/N	DESCRIPTION
1	3x3	VINYL CLOTH
6	SB4-4	RIVETS



DOUBLER ASSY FABRICATION

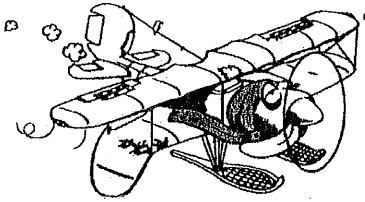
NOTES

- A. MAKE A 1/4 IN. SLIT IN THE LEATHER (OR VINYL). THIS SLIT MUST REMAIN VERTICAL WHEN INSTALLED. MAKE SLIT IN FABRIC HEADLINER TO MATCH.
- B. METAL HEADLINER - MAKE 3" HOLE PRIOR TO INSTALLING DOUBLER ASSY.
- C. SB4-4 ARE MARSON KICK-FAST

SUGGESTED METHOD:
 HEADLINER MODIFICATION
 TO INSTALL THE REAR
 SEAT SHOULDER HARNESS
 IN THE PIPER PA-18

DWG. 3262 1 of 2

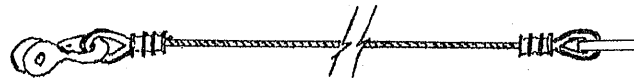
Document Number: 3232-1
 Revision: A
 Date: July 6, 2009
 Sheet 3 of 6



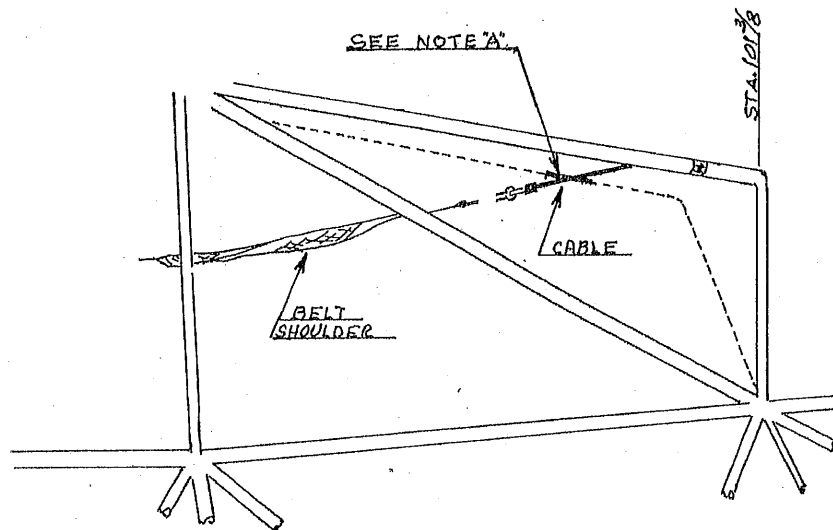
F. Atlee Dodge Aircraft Services, LLC.

6672 Wes Way Anchorage, Alaska 99518
 Phone: (907) 344-1755 * Fax: (907) 344-6720

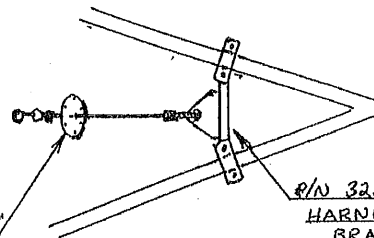
1 ea.	AN115-32	SHACKLE
2	AN100-5C	THIMBLE
2	1A-4-P	NICOPRESS SLEEVE
AS REQ	5/32 x 7 x 19	A/C CABLE
QTY	P/N	DESCRIPTION



5/32 x 7 x 19 CABLE
CUT TO DESIRED
LENGTH



F. ATLEE DODGE
 P.O. BOX 190409
 ANCHORAGE, AK. 99519
 (807)344-1755



SEE NOTE "A"

P/N 3232-2 SHOULDER
 HARNESS ATTACH
 BRACKET

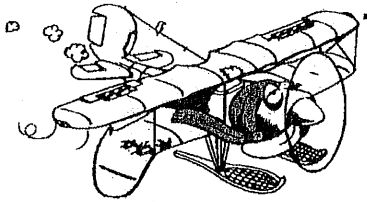
NOTES

- A. METAL HEADLINER SHOWN,
- METAL HEADLINER USE 3262-3
- CLOTH HEADLINER USE 3262-2

DOUBLE ASSY
INSTALLATION

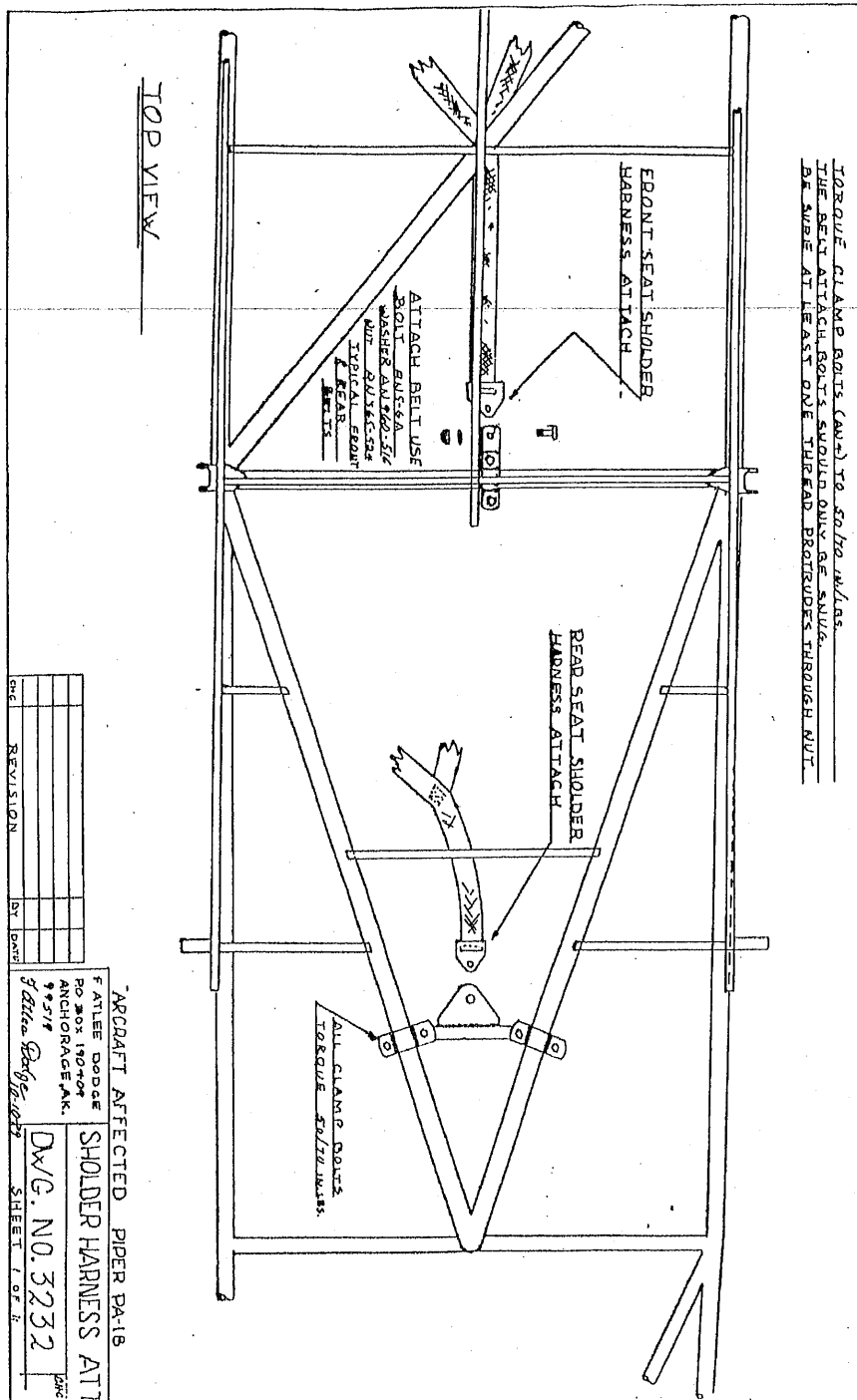
DWG 3262 PAGE 2 of 2

Document Number: 3232-1
 Revision: A
 Date: July 6, 2009
 Sheet 4 of 6



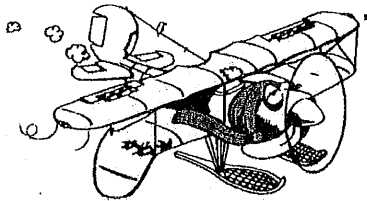
F. Atlee Dodge Aircraft Services, LLC.

6672 Wes Way Anchorage, Alaska 99518
 Phone: (907) 344-1755 * Fax: (907) 344-6720



REV	REVISION	BY	DATE

AIRCRAFT AFFECTED PIPER PA-18
 F. ATLEE DODGE
 PO BOX 190409
 ANCHORAGE, AK.
 99571
 J. Atlee Dodge
 DWG. NO. 3232
 SHEET 1 OF 6



F. Atlee Dodge Aircraft Services, LLC.

6672 Wes Way Anchorage, Alaska 99518
 Phone: (907) 344-1755 * Fax: (907) 344-6720

Part Name	Part Number	Approved Replacement For	FAA Approval Basis and Approved Data	Installation Eligibility: MAKE	Installation Eligibility: MODEL
Shoulder Harness Attach Bracket	3232	No Original Part	FAR 21.305(d) F. Atlee Dodge Drawing 3232-P dated May 4, 1996	Piper Aircraft	J-3C, J-3F, J-3L, J-5A, J-5B, J-5C, PA-11, PA-11S, PA-12, PA-12S, PA-18, PA-18S, PA-18"105", PA-18S"105", PA-18A, PA-18"125", PA-18A"125", PA-18S"125", PA-18A"135", PA-18S"135", PA-18AS"135", PA-18"150", PA-18A"150", PA-18S"150", PA-18AS"150"

Document Number: 3232-1

Revision: A

Date: July 6, 2009

Sheet 6 of 6