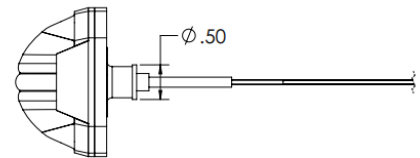
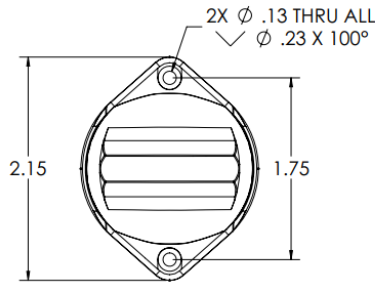
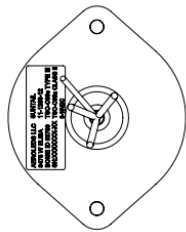
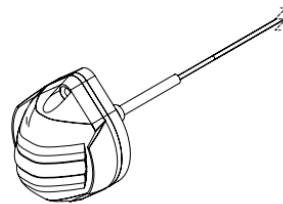
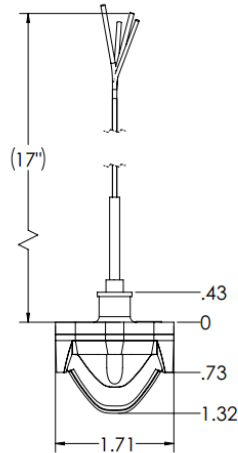
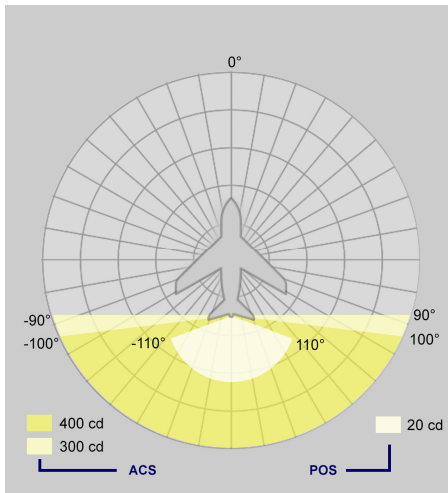




Product Datasheet

SunTail Position/Strobe Light

11-1260-24



Voltage: 26-32VDC
Current: Position: 0.2A at 28V
 Strobe: 1.2A at 28V (190ms on-time)
Average Power: 17 Watts
Power Supply: Built In
Synchronization: Built In
Thermal Protection: Built In
Position: TSO'd (C-30c Type III)
Strobe: TSO'd (C-96a Class II, III)

Length: 2.2"
Width: 1.7"
Height: 1.3"
Weight: 2.5 Oz
Heat Sink Material: Aluminum/Clear Coat
Lens Material: Polycarbonate
MTBF: >30,000 Hours
Temperature Range: -55C to +70C