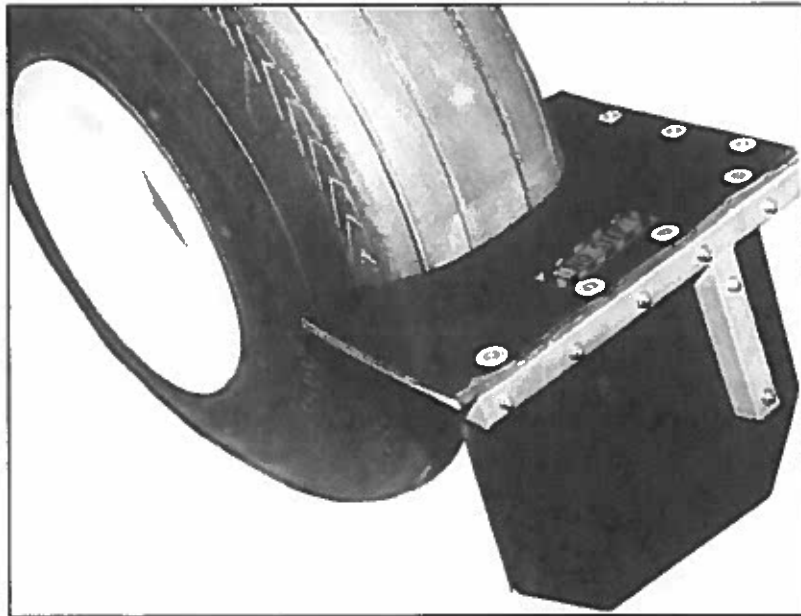
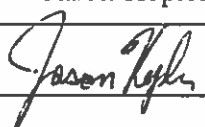


**Aero Twin, Inc. Main Gear Gravel Deflectors,  
P/N GD8-100  
for  
Cessna Model 208**

**INSTALLATION INSTRUCTIONS**

Manual GD8-IM



<b>LOG OF REVISIONS</b>			
<b>REVISIONS</b>		<b>PAGES REVISED AND DESCRIPTION OF REVISIONS</b>	<b>AERO TWIN SIGNATURE</b>
<b>NO.</b>	<b>DATE</b>		
--	6/16/91	Original Issue	--
A	11/11/91	Revised per ECO AT-20	--
B	7/4/97	Revised per ECO AT-37, Format revised, All pages revised.	Michael Lovett
C	02/14/09	Revised per ECO AT-132, revised all pages.	Jason Kepler
D	11/12/12	Revised pages 2 and 3 per ECO AT-150.	Jason Kepler
E	07/16/14	Revised pages 2 and 3 per ECO AT-162.	

## Aero Twin, Inc. Main Gear Gravel Deflectors P/N GD8-100

### 1.0 Installation

**NOTE: This kit is not to be used with installed speed fairings or other accessories mounted to the main gear.**

1. Remove left main wheel assembly per FAA approved maintenance manual.
2. Remove nuts from upper two axle bolts - do not remove bolts. Remove washers and spacers - the spacers are not used when gravel deflector is installed.
3. Install the left gravel deflector as shown on Drawing GD8/Q-100-I: Use NAS1149F0963P and/or NAS1149F0932P washers as required for correct thread exposure.
4. Install new nuts, MS21044N9, and torque per FAA approved maintenance manual. Reinstall wheel assembly.
5. Install right gravel deflector following the same procedure (steps 1-4).
6. Fit the rubber tire scrapers on the top surface of the installed gravel deflector frames, with the circular cut-out butted against the tire's tread. Match-drill the fastener holes upward through the frame and then through the fitted rubber scraper. Bore out the holes in the rubber scraper using a 1/4 drill bit.
7. Install the tire scrapers using the supplied hardware.
8. Trim excess material from edge of scrapers, flush with outer edge of frame.
9. Attach the "NO STEP" placard on the top side of the rubber tire scraper as shown on drawing GD8/Q-100-I.
10. Execute FAA form 337 in duplicate, stating that this gravel deflector kit was installed in accordance with this STC. The total change in airplane empty weight and balance is:  
     208 and 208A: 13.0 lb. at fuselage station 206.0  
     208B: 13.0 lb. at fuselage station 237.5

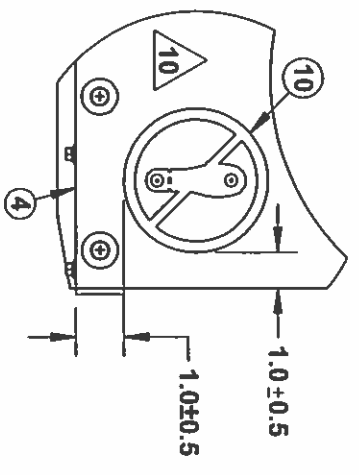
### 2.0 Parts List

Qty	Part Number	Item Description
1	208GD-L	Left Gravel Deflector Assembly
1	208GD-R	Right Gravel Deflector Assembly
2	GD8-114-A/B	Rubber Tire Scraper (see note below)
6	NAS1149F0963P	Washer
6	NAS1149F0932P	Washer
4	MS21044N9	Nut
14	MS21042L3	Nut
14	A3235-028-935 or FW235-28	Washer
4	MS24694S70	Screw
10	MS24694S68	Screw
14	NAS1149F0332P	Washer
2	GD-NSP	Placard
4	MS20470A4-9	Rivet
4	NAS1149FN432P	Washer

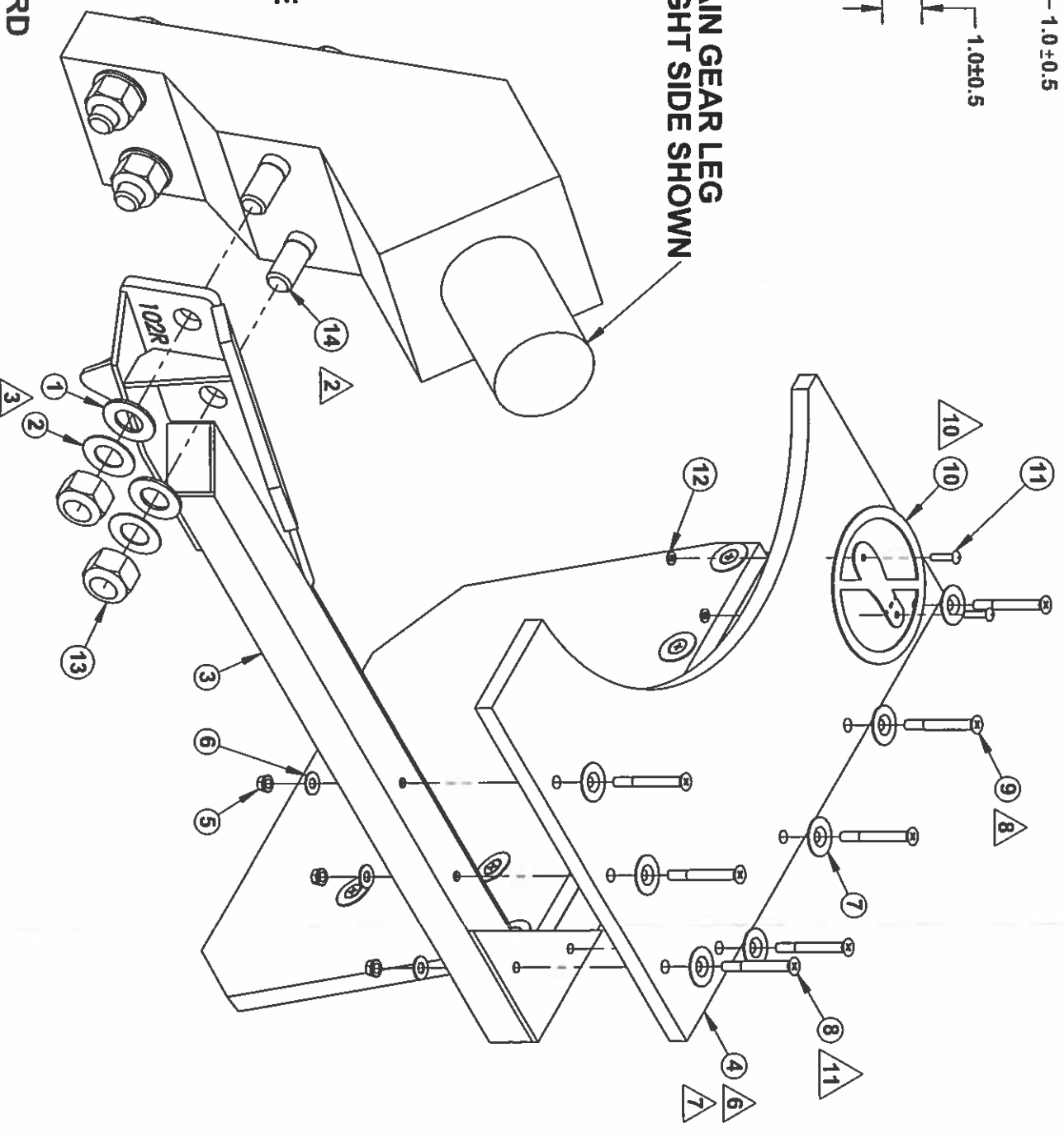
**NOTE: GD8-114-A scrapers are for use with 8.50-10 standard oversize tires; GD8-114-B scrapers are for use with 29x11-10 tires (installation of these tires on aircraft of Serial No. 20800121 or earlier requires Aero Twin STC #SA2334NM).**

-----END-----

REVISIONS		
LET	REVISION	DATE



MAIN GEAR LEG  
RIGHT SIDE SHOWN



WHEEL AND BRAKE  
ASSEMBLIES  
NOT SHOWN

OUTBOARD  
FORWARD

**NOTES:**

1. REMOVE WHEEL ASSEMBLY PER FAA APPROVED MAINTENANCE MANUAL.
2. REMOVE NUTS FROM UPPER TWO AXLE BOLTS. REMOVE WASHERS AND SPACERS (THE CESSNA SPACERS ARE NOT USED WHEN GRAVEL DEFLECTOR IS INSTALLED). DO NOT REMOVE BOLTS ON CESSNA 208 AIRCRAFT. ON QUEST 100 AIRCRAFT, REMOVE BOLTS AND REPLACE WITH ITEM -14.
3. INSTALL GRAVEL DEFLECTOR AS SHOWN. USE NAS1149F0963P AND/OR NAS1149F0932P WASHERS AS REQUIRED FOR CORRECT THREAD EXPOSURE.
4. INSTALL NEW NUTS, ITEM -13, AND TORQUE PER FAA APPROVED MAINTENANCE MANUAL.
5. INSTALL WHEEL ASSEMBLY PER FAA APPROVED MAINTENANCE MANUAL.
6. P/N GD8-114-A IS FOR USE WITH 8.50-10 TIRES. P/N GD8-114-B IS FOR USE WITH 29X1-10 TIRES (INSTALLATION OF THIS TIRE ON CESSNA 208 AIRCRAFT OF SERIAL NUMBER 20800121 OR EARLIER REQUIRES AERO TWIN, INC. STC #SA2334NM). THE SCRAPERS ARE SUPPLIED UNDRILLED AND OVERSIZED.
7. FIT SCRAPER ON TOP SURFACE OF FRAME. SNUG AGAINST TIRE. MATCH DRILL 3/16 HOLES THROUGH SCRAPER AT (7) PLACES. BORE OUT HOLES THROUGH SCRAPER USING 1/4 DRILL.
8. INSTALL SCRAPER USING LISTED HARDWARE. TORQUE NUTS TO 10-15 IN-LBS. ENSURE PROPER THREAD EXPOSURE THROUGH LOCKING FEATURE OF NUTS, ITEM -5.
9. TRIM EXCESS MATERIAL FROM SCRAPER, FLUSH WITH OUTSIDE EDGE OF FRAME.
10. AFTER TRIMMING SCRAPER, POSITION ITEM -10 AS SHOWN AND MATCH DRILL SCRAPER TO ACCEPT ITEM -11 RIVETS. ATTACH ITEM -10 TO TOP OF SCRAPER USING ITEMS -11 AND -12. OPTIONALLY, ITEMS -10, -11, AND -12 MAY BE OMITTED AND REPLACED WITH A SELF-ADHESIVE "NO STEP" PLACARD (AVAILABLE FROM WWW.AIRCRAFTSPRUCE.COM AS P/N 09-34500) AFFIXED TO THE TOP SURFACE OF THE SCRAPER, CENTERED AT THE REAR EDGE.
11. (2) MS24694S70 ARE INSTALLED IN THE CORNER THROUGH THE GUSSET PLATE.

\*QUANTITY AS REQUIRED: TWELVE (12) EACH SUPPLIED WITH KIT.

ITEM	QTY	PART NO.	DESCRIPTION	MATERIAL	DIMENSION	SPECIFICATION
1	*	NAS1149F0963P	WASHER	-	-	-
2	*	NAS1149F0932P	WASHER	-	-	-
3	1R, 1L	208GD-R(L)	GRAVEL DEFLECTOR WELDMENT	-	-	GD28-A: 3 OF 3
4	2	NOTE 6	TIRE SCRAPER	-	-	GD28-P: 3 OF 3
5	14	MS210A213	NUT	-	-	-
6	14	NAS1149F0332P	WASHER	-	-	-
7	14	A3235-028-935	WASHER	-	-	-
8	4	MS24694S70	SCREW	-	-	-
9	10	MS24694S68	SCREW	-	-	-
10	2	GD-NSP	NO STEP PLACARD	-	-	GD-NSP: 1 OF 1
11	4	MS20470A4-9	RIVET	-	-	-
12	4	NAS1149FN432P	WASHER	-	-	-
13	4	MS210A4N9	NUT	-	-	(SUB NAS1021N9)
14	4	NAS6609-56	BOLT	-	-	-

PART NUMBER: -

PROPRIETARY AND CONFIDENTIAL

THIS DRAWING CONTAINS PROPRIETARY SPECIFICATIONS, DATA, INFORMATION AND TECHNICAL MATERIALS THAT ARE THE SOLE PROPERTY OF AERO TWIN, INC. TO BE TREATED BY ITS RECIPIENT ON A CONFIDENTIAL BASIS AND IS NOT TO BE SHOWN OR DISCLOSED TO ANY UNAUTHORIZED ORGANIZATION OR PERSON.

NAME	DATE
J. KEPLER	07-16-14
C. WRIGHT	07-16-14
J. KEPLER	07-16-14

**AERO TWIN, INC.**  
2403 MERRILL FIELD DRIVE - ANCHORAGE, ALASKA - 99501  
(907)274-6166 - WWW.AEROTWIN.COM  
- CESSNA 208 AND QUEST 100 KODIAK

**GRAVEL DEFLECTOR  
INSTALLATION**

SIZE	DWG. NO.	REV
B	GD8/Q-100-1	N/C
SCALE: NOT TO SCALE	SHEET 1 OF 1	