

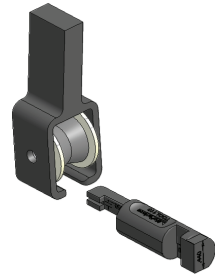
# Seat Roller Housing Gauge for Cessna Aircraft

## Part Number TOOL110

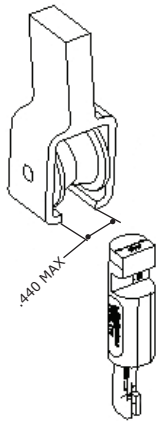
- Hardened Stainless Steel
- Step by step instructions
- Save time! Two times faster than calipers
- Measures all three dimensions

### Checks Cessna seat roller housing limits as per FAA AD 2011-10-09

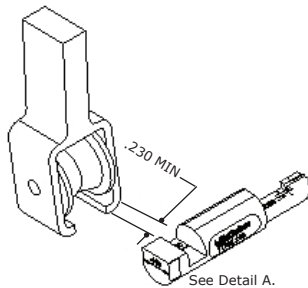
The McFarlane Seat Roller Housing Gauge is designed to facilitate inspection of seat roller housings for wear in Cessna aircraft as required by mandatory FAA AD 2011-10-09. Designed for seat roller housings that are replaceable, this gauge simplifies determining whether the housing is in or out of tolerance by allowing the areas of concern to be gauged as opposed to measuring each individual attribute on each seat roller housing with calipers. Do not use on welded/non-replaceable seat roller housings.



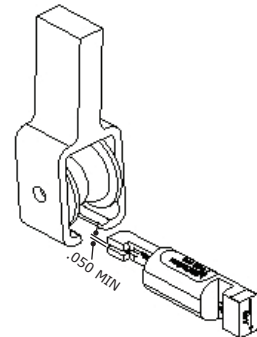
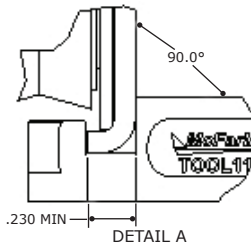
P/N TOOL110



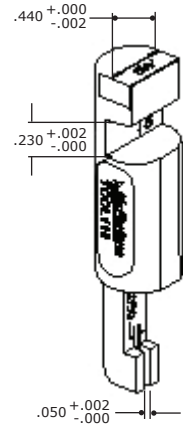
**Step 1.**  
.440 gauge surfaces must not enter space between housing tangs.



**Step 2.**  
The bend area of the tang must not enter the space on the gauge marked .230.  
See Detail A.



**Step 3.**  
The .050 space on the gauge must not fit on the worn area of the tang.



To calibrate; ensure gauge dimensions are within the tolerances shown.

.440 + .000/- .002  
.230 + .002/- .000  
.050 + .002/- .000

**Seat Roller Housings - FAA-PMA Approval Pending**